

Click on the picture to read the news article.

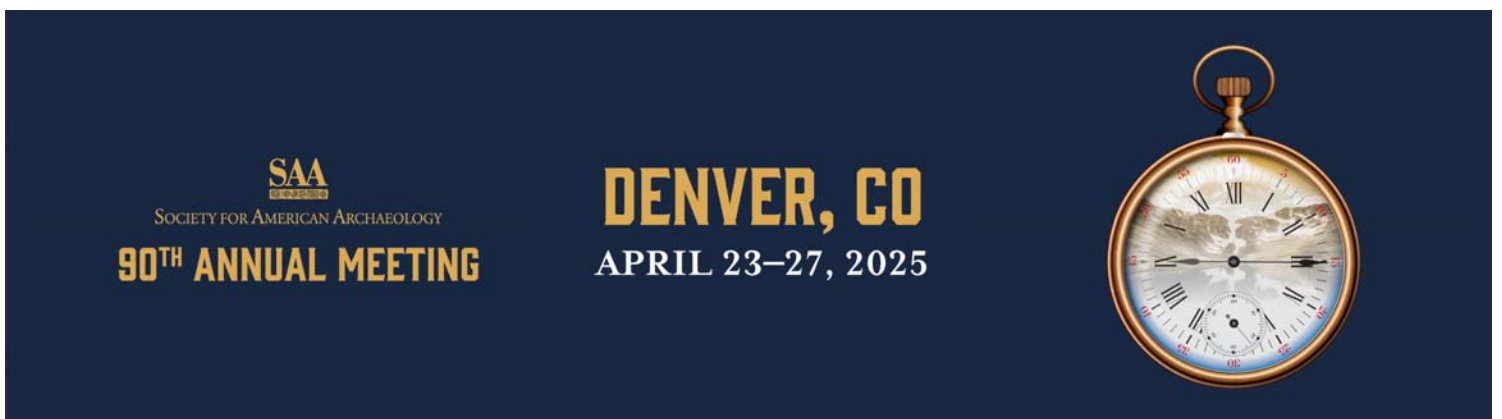
Cremains Recovery Still Going On in LA

We thank the volunteers for their time, traveling at their own expense, and being willing to make a difference in a stranger's life. At this point in time, the Alta Heritage Foundation / ICF team has been able to return about 150 sets of human cremains back to families affected by the Palisades and Eaton wildfires.



Photo credit Jennifer Cheung and Steven Nilsson

From left to right Sheila, dog handler; Adam, archaeologist; Peg and K9 Cedar; the homeowners, Tyler and Amber; Lauren, archaeologist; Robyn, archaeologist; Natalie, lead archaeologist.



Another SAA Annual meeting has come and gone. We talked so much that none of us had any voice left. As usual, we had a table in the exhibit hall where

we were available to talk to students and archaeologists from all over the world. I hate to say it, but we spilled out into the hall.



Our table in the exhibit hall. Ronda and Lisa are talking to our visitors.



left to right: Robert, Adela and Lynne

We were repeatedly told that we had the best booth, and we agree. With lots of fun swag and dogs, how could we go wrong?



Kalli, our youngest dog in training, belonging to John G., ran the kissing booth.



Our Official Greeters: Badger and Kitana

Nondestructive Alternatives: Canine Remote Sensing_(Scenting)

Session Abstract:

For many years, Historic Human Remains Detection (HHRD) dogs, specifically trained to locate ancient burials, have been involved in noninvasive surveys where unmarked burials are suspected. Their ability to identify the scent of historic and pre-contact human remains adds vital information that can help protect burial areas. The role of archaeology has changed greatly in the last twenty years. CRM firms, archaeologists, and Native communities must adapt techniques to meet new needs (for example, additions to AB 52-CEQA and global climate change). Requests to review museum and academic collections to locate human remains and associated funerary items are more common. Burials that are in danger of eroding or flooding need to be located so they can be protected. This symposium includes experts from different fields who have

combined their specialty with the information provided by HHRD dogs. This multi-disciplinary approach allows all parties involved to reach a common goal - to preserve and protect sensitive cultural material or areas.

On Friday, we had our symposium with seven different papers being presented.

Click on the links below to view the presentation.



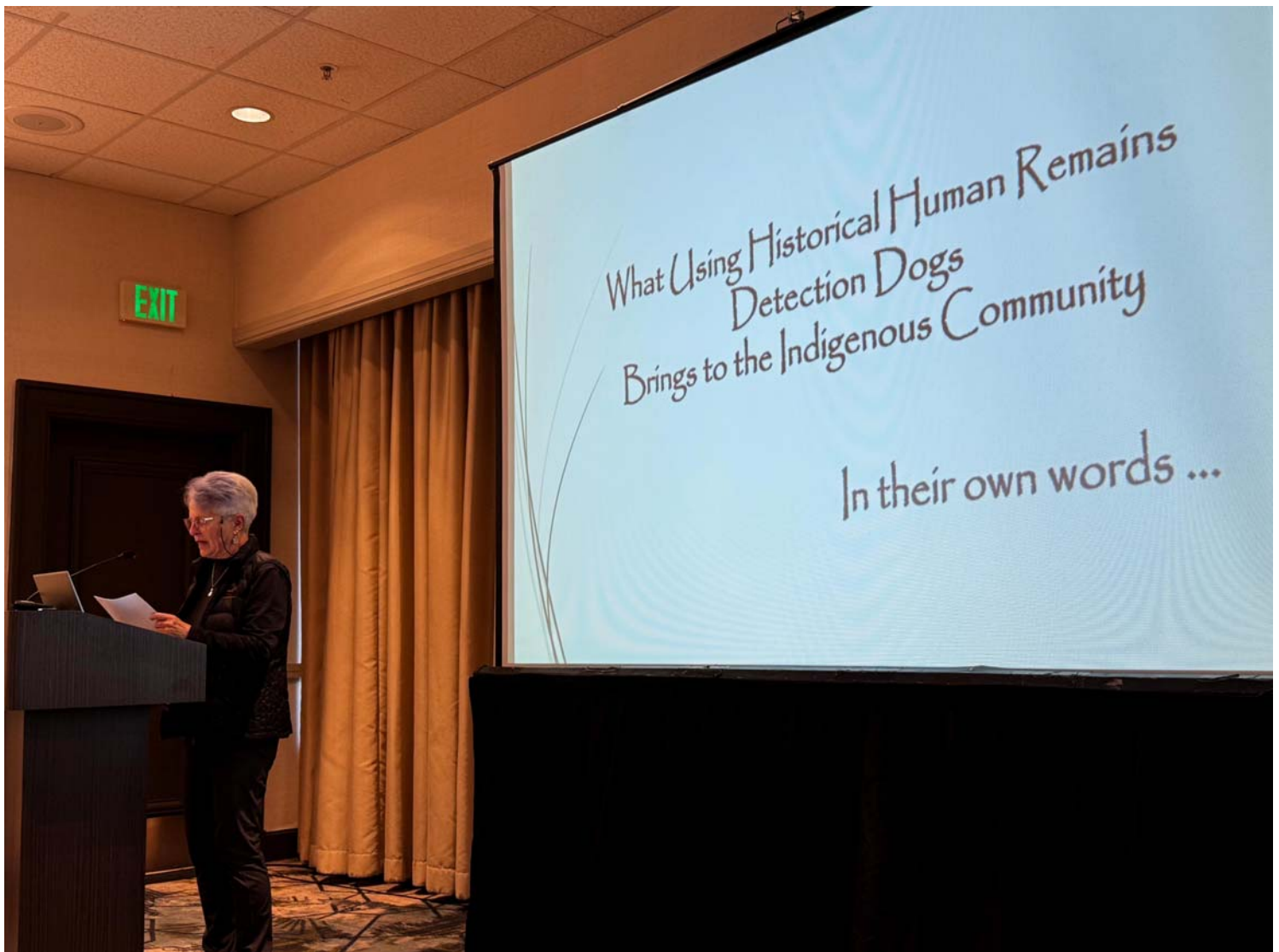
[Historic Human Remains Detection Dogs 101 for Archaeologists](#)

Lisa Lee



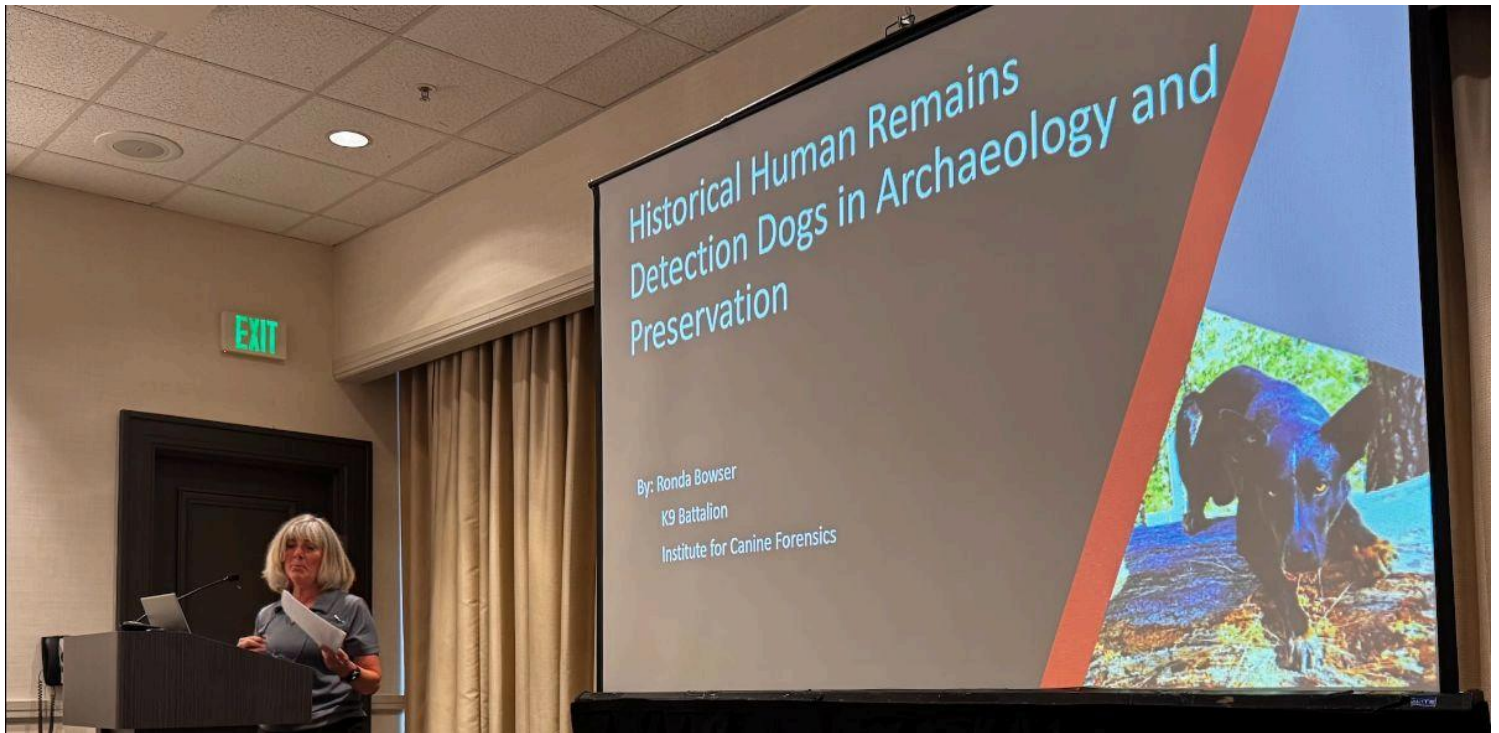
Evolving Archaeology and Unique Scenarios for HHRD Dogs

Adela Morris



What Using Historical Human Remains Detection Dogs
Brings to the Indigenous Community ... in their own words

Lynne Engelbert



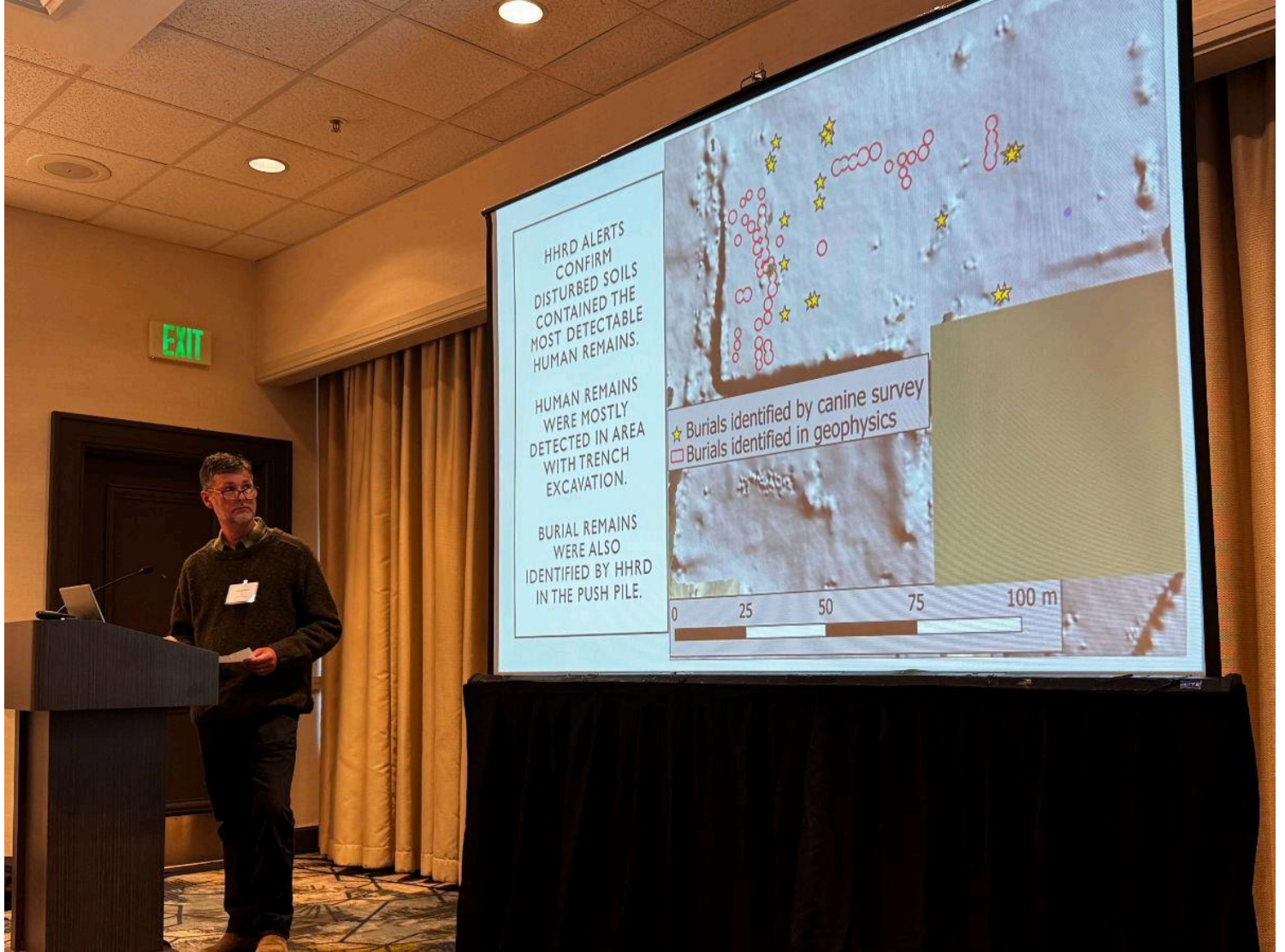
Advancing the Role of Historic Human Remains Detection Dogs: Expanding
Capabilities in Archaeology and Preservation

Ronda Bowser



Going to the Dogs: Applying HHRD in the Rio Grande Valley of Texas

Russ Skowronek



Multi Method Burial Surveys Addressing the Apartheid of the Departed

Sigrid Arnott and David Maki



Canine Detection of Scattered Scent from Historic Dismembered Human Bodies

John Grebenkemper



Institute for Canine Forensics
P.O. Box 620699
Woodside, CA 94062-0699
(650) 503-4473 | info@ICFK9.org | www.ICFK9.org



We are happy to talk with you about your project and how our dogs might help locate human remains or burials. Call, email, or check us out on Facebook or our website. (You can find past newsletters there, too.)

Please feel free to pass this newsletter along to anyone who might be interested.

Copyright © 2024 Institute for Canine Forensics. All rights reserved.

Want to change how you receive these emails?
You can [update your preferences](#) or [unsubscribe from this list](#).

[why did I get this?](#) [unsubscribe from this list](#) [update subscription preferences](#)

Institute for Canine Forensics · P.O. Box 620699 · Woodside, CA 94062 · USA